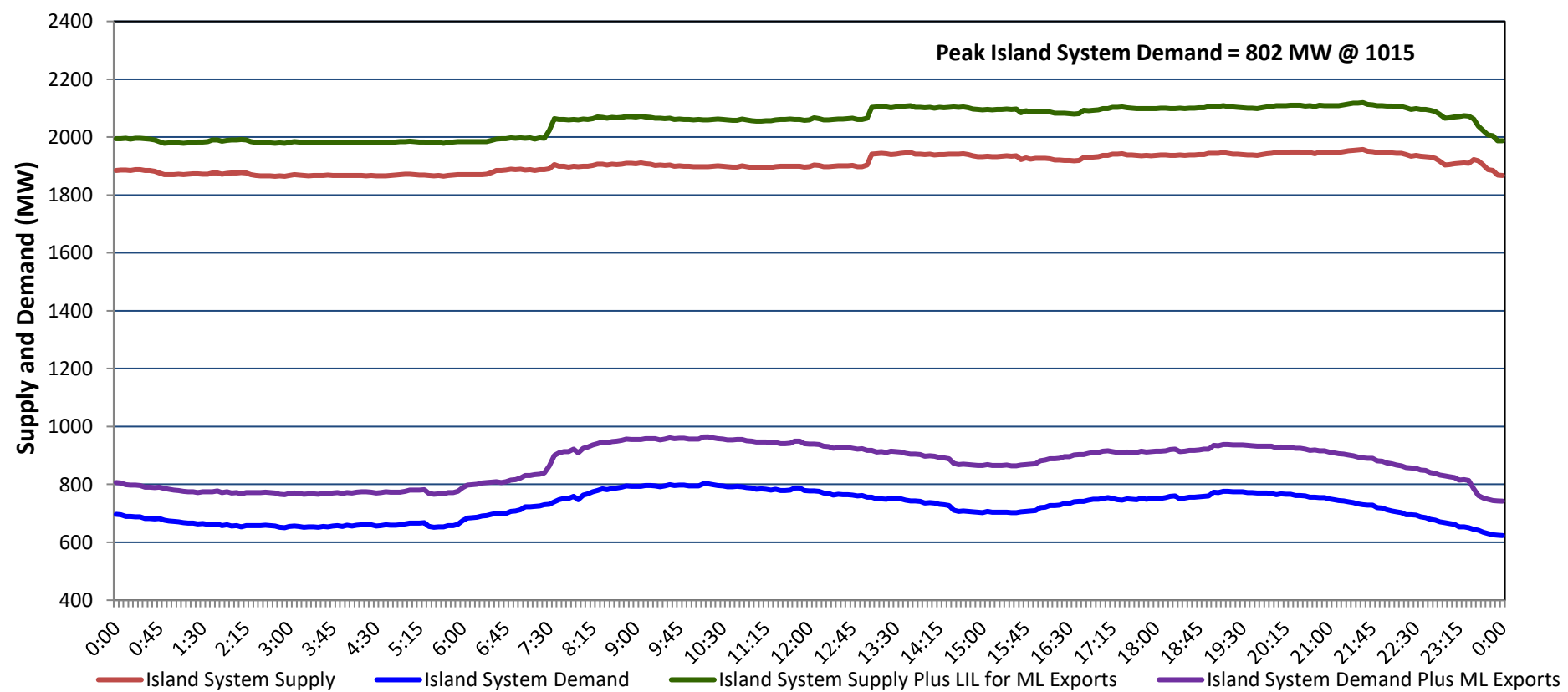


# Newfoundland Labrador Hydro (NLH) Supply and Demand Status Report Filed Monday, October 21, 2024

## Section 1 Island Interconnected System - Supply, Demand & Exports Actual 24 Hour System Performance For Sunday, October 20, 2024



### Island Supply Notes For October 20, 2024 <sup>1</sup>

- A As of 1011 hours, April 12, 2024, Holyrood Unit 1 unavailable due to planned outage (170 MW).
- B As of 0946 hours, October 06, 2024, Upper Salmon Unit unavailable due to planned outage (84 MW).
- C As of 1950 hours, October 18, 2024, Labrador Island Link available at 450 MW due to forced derating (700 MW) - Bipole.
- D At 1302 hours, October 20, 2024, Granite Canal Unit available (40 MW).

## Section 2 Island Interconnected System - Supply, Demand & Outlook

Mon, Oct 21, 2024	Island System Outlook <sup>2</sup>	Seven-Day Forecast	Island System Daily Peak Demand (MW)	
			Forecast <sup>8</sup>	Adjusted <sup>6</sup>
Island System Supply: <sup>4</sup>	1,960 MW	Monday, October 21, 2024	870	820
NLH Island Generation: <sup>3,7</sup>	1,440 MW	Tuesday, October 22, 2024	915	865
NLH Island Power Purchases: <sup>5</sup>	75 MW	Wednesday, October 23, 2024	960	910
NP and CBPP Owned Generation:	195 MW	Thursday, October 24, 2024	845	795
LIL/ML Net Imports to Island: <sup>9</sup>	250 MW	Friday, October 25, 2024	850	800
		Saturday, October 26, 2024	895	845
7-Day Island Peak Demand Forecast:	960 MW	Sunday, October 27, 2024	925	875

### Island Supply Notes For October 21, 2024

- Notes:
1. Generation outages for running and corrective maintenance are included. These are not unusual for power system operations. They generally do not impact customer supply. Hydro schedules outages to system equipment whenever possible to coincide with periods when customer demands are low and sufficient supply reserves are available. However, from time to time equipment outages are necessary and reserves may be impacted.
  2. As of 0800 Hours.
  3. Gross continuous unit output.
  4. Gross output from all Island sources (including Note 4).
  5. NLH Island Power Purchases include: ML Imports, Exploits Generation, Rattle Brook, Star Lake, Wind Generation and capacity assistance (when applicable).
  6. Adjusted for interruptible load and the impact of voltage reduction when applicable.
  7. Due to limitations inherent in the design of combustion turbines, the output of combustion turbines may be reduced in the event that ambient temperatures exceed the threshold required for full rated output. This threshold is dependent on the design of each turbine.
  8. Does not include ML Exports.
  9. LIL Import sunk in the Island System. Actual LIL flows will be restricted by various system conditions including, but not limited to, Island Load, ML Exports and Avalon Unit status.

## Section 3 Island Peak Demand and Exports Information Previous Day Actual Peak and Current Day Forecast Peak

Sun, Oct 20, 2024	Island Peak Demand <sup>10</sup>	10:15	802 MW
	Exports at Peak		162 MW
	LIL Net Imports to Island		5,842 MWh
Mon, Oct 21, 2024	Forecast Island Peak Demand		870 MW

- Notes: 10. Island Demand is supplied by NLH generation and purchases, LIL Imports plus generation owned and operated by Newfoundland Power and Corner Brook Pulp & Paper (Deer Lake Power, DLP).